

Shorten your path to IoT monetization by simplifying design deployment and management of products and solutions

# Telit ONEEDGE™

A secure, prepackaged management software suite embedded within data efficient cellular IoT modules



## Harness the LPWA Revolution

With LTE-M and NB-IoT quickly becoming ubiquitous comes the need for cost effective ways to start and scale massive IoT deployments. OneEdge tools accelerate your enterprise digitalization journey – reducing time-to-market, total cost of ownership, and risk.

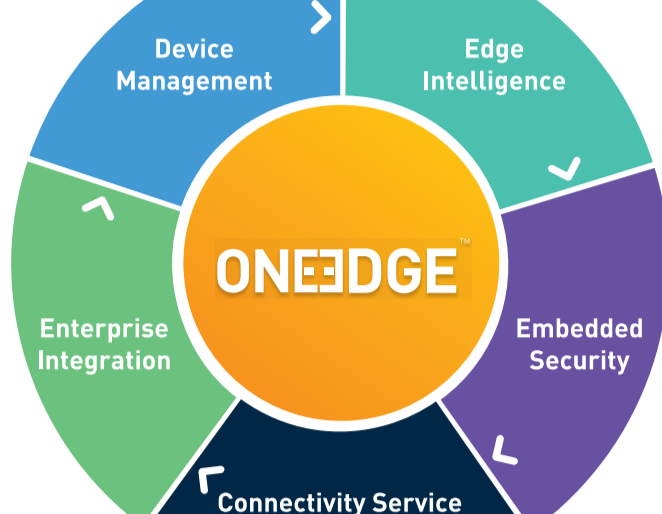
**Telit OneEdge will support you:**

- From Prototype to Production
- From Development to Deployment
- From Mock-Up to Mature Solution



## Shorten Your Path to IoT Monetization

OneEdge is an innovative module-embedded software suite enabling solutions for a new generation of Telit's cellular LPWA IoT modules.



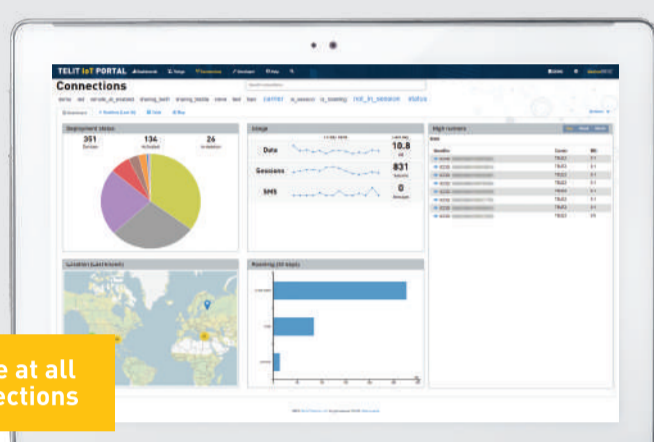
With integrated, secure, easy-to-use tools, OneEdge dramatically simplifies design, deployment and management of IoT products and solutions, enabling a leap ahead into the new 5G super-connected world.

Telit's preconnected OneEdge modules are fully tested and network certified, so they're ready to connect to the cloud as soon as they're activated. From a single dashboard, you can manage all your devices, connectivity and application data—there's no need to integrate other devices or management platforms.

## Connectivity Management

### Connected Device Platform (CDP) Pro

- Design and manage your service profiles
- Self-care subscription and lifecycle management
- Real-time diagnostics and usage controls
- Integration with various carriers and platforms including Jasper, Vodafone GDSP, Ericsson DCP, Telefonica Kite, AT&T, Verizon, T-Mobile and more



Quick glance at all global connections

**CDP Pro**  
Manage your SIMs. Fully integrated to Multiple MNOs

**Intelligence**  
BI environment to identify and analyze trends

**Bridge**  
VPN and IP infrastructure redundant, secure and 24/7 monitored

## Telit simWISE Technology

Dramatically reduce the device footprint, provisioning complexity, and total cost of ownership of IoT devices

- SIM functions implemented directly into the module
- GSMA compliant secure remote provisioning
- Strategic partnership with IDEMIA to further harden solution security and reach
- Roaming (Based on LTE-M and 2G access networks) and Global Data Plans based on Telit's connectivity offering
- Fully integrated into Telit's CDP Pro Portal – a fully integrated dashboard for simplified management



## Device Management

Greatly simplify onboarding, remote provisioning and configuration, monitoring and troubleshooting.

### Telit IoT Portal Device Management

- Seamlessly leverage open standards LWM2M for secure, efficient communications & control
- Scalable and easy to implement device management campaigns
- Automated actions, alerts and alarms based on cloud logic triggers
- New portal AppCenter enables simplified user experience and streamlined services such as FOTA

### Telit FOTA App

- Telit OTA/FOTA configuration, remote provisioning and firmware updates
- Software updates are secured and signed to protect hardware integrity
- Scheduled or ad-hoc campaigns: single unit, predefined groups, entire installed base
- Campaigns based on: organization, geography, technology, and more
- Delta FOTA reduces campaign time, connectivity costs, saves memory for more apps and functionality



## LWM2M Technology

A common & standard protocol for managing lightweight and low power IoT devices

- Benefits**
- Efficient data protocol reduces overhead and data consumption
    - Lower data plan costs
    - Lower power consumption
    - Secure and reliable
  - User customizable
  - Open standards based



## Security

OneEdge security includes end-to-end protection of the device, transport and platform.

### Device

Module secured and personalized at time of manufacture

Device is 'born' with ID, credentials and SIM functions embedded in a trusted zone

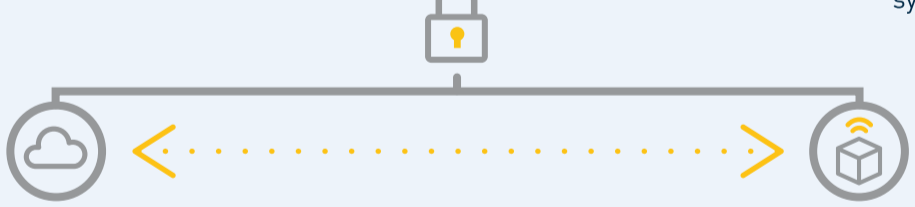
### Transport

Device to cloud over encrypted communication for secure end-to-end data and control

### Platform

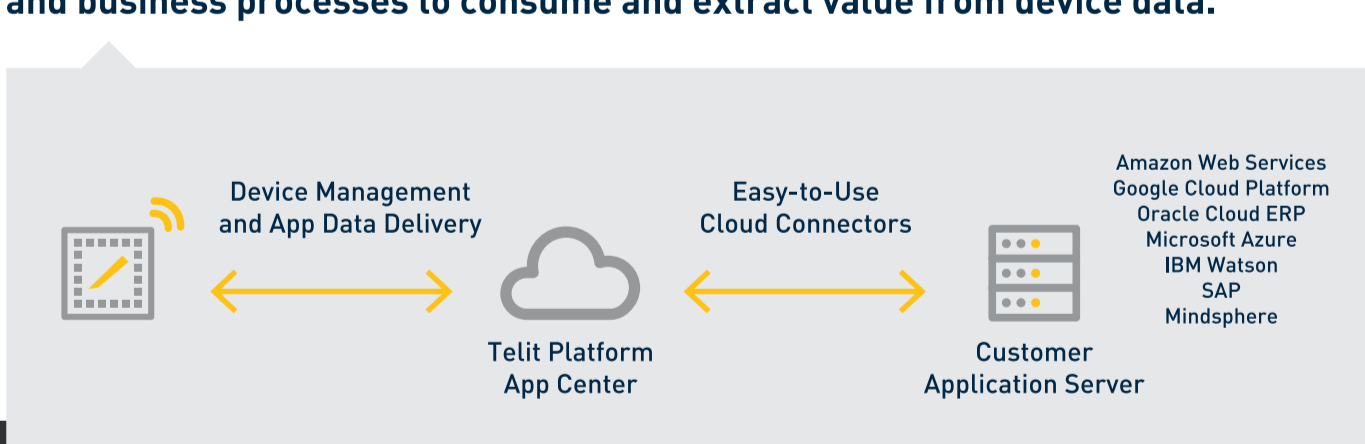
Telit servers are protected against security threats

'Thing' IDs and credentials are automatically synchronized



## Enterprise Integration

Enabling the critical integration of IoT solutions into customers enterprise systems and business processes to consume and extract value from device data.



## Edge Intelligence

Speed deployment, optimize behavior and resource usage, automate operations involved in connecting to cellular networks.

Define and build your own IoT edge applications.

**Device Management Made Easy**

**Connection Optimizer**  
Simplifies management of cellular connection lifecycle

**Telit's AppZone**  
Runs customer's embedded software on the module

## Leverage the Power of Telit

Telit is an industry pioneer and has become a trusted partner of the world's largest brands. IoT is in our DNA. Delivering the business outcomes for our customers is what sets us apart. The Telit team brings expertise in hardware, connectivity, and platforms that is unmatched in the industry.

- **Concept Ideation and Product Design**  
Eliminate costly hardware design revisions. We offer assistance with: schematic, printed circuit board layout, component placement, component selection, measurement and characterization of integrated antenna, and system architecture.
- **System Architecture and Certification Support**  
Telit offers global support to help you manage your product certification effort anywhere in the world. Regulatory compliance and certification standards vary greatly and are updated regularly. By leveraging our global experience, our team of engineers provide an analysis that will guide you through the process of preparing your product for CE, FCC, IC, PTCRB, GCF certifications and most mobile network approvals, such as carrier device approval.
- **Deployment at Scale and Life Cycle Management**  
Telit understands that our solutions are an integral part of your daily operations, support and services offerings. To ensure your success, our knowledgeable support engineers are prepared to assist you, whether it's a quick question or step-by-step assistance. Our Technical Support Help Desk personnel are dedicated to providing our customers access to the information, tools, and expertise you need and expect from your solution providers.

[telit.com/oneedge](http://telit.com/oneedge)

Telit reserves all rights to this document and the information contained herein. Products, names, logos and designs described herein may in whole or in part be subject to intellectual property rights. The information contained herein is provided "as is". No warranty of any kind, either express or implied, is made in relation to the accuracy, reliability, fitness for a particular purpose or content of this document. This document may be revised by Telit at any time. For most recent documents, please visit [www.telit.com](http://www.telit.com)